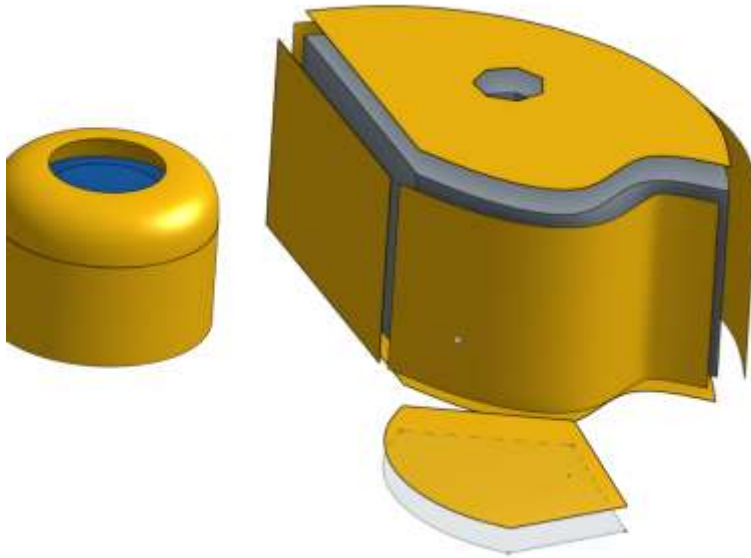
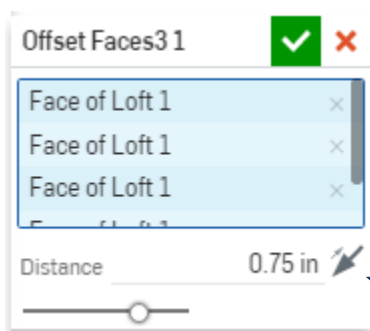


## Overview

The Offset Face module allows you to offset one or more faces in your model.



## Usage



Select Surfaces to offset.

**Offset Distance.** Note that many surfaces cannot be offset very far before strange things happen

## Known Limitations

- Onshape does not yet provide a way to offset surfaces, so the methods used in this feature are approximate.
- Interior holes inside of irregular surfaces are currently ignored.

## Using Onshape Featurescript

Featurescript is a way to extend Onshape with powerful, easy to use new features. You can learn more about it at <https://www.onshape.com/featurescript>

## Support

For support, please email [dev@parametricparts.com](mailto:dev@parametricparts.com) or visit <http://store.parametricparts.com/contact.html>

## Warranty

No warranty is provided, explicit or implied.